



FOR LEASE

OFFICE OR RETAIL SPACE LOCATED IN
RIVERSIDE VILLAGE SHOPPING CENTRE

164 & 166 - 290 RIVERSIDE DRIVE | PENTICTON BC

STEVE LAURSEN

PERSONAL REAL ESTATE CORPORATION

250.808.8101

JOEY STENSLAND

AGENT

250.470.7234

ROYAL LEPAGE KELOWNA

COMMERCIAL

www.rlkcommercial.com



PROPERTY DETAILS



MUNICIPAL ADDRESS

Units 164 & 166
290 Riverside Drive
Penticton, BC



LEASEABLE AREA

2,131 SF



ZONING

C4 - General Commercial



PARKING

Shared on-site



POSSESSION

Immediate



LEASE RATE

\$26



NNN

\$9.85 / SF

THE OPPORTUNITY

Introducing a versatile leasing opportunity in the notable Riverside Village Shopping Centre, offering a prime space suitable for office, retail, or restaurant use. This exceptional property features a practical and spacious unit layout with a welcoming front desk/reception area.

Designed to cater to diverse business needs, the unit currently comprises nine well-appointed offices arranged along the perimeter. This flexible space can be customized to accommodate various office configurations, retail displays, or restaurant concept.

Situated at the first point of entry from Kelowna, Riverside Village enjoys unparalleled visibility with high vehicle and pedestrian traffic. This strategic location ensures maximum exposure, providing a steady stream of potential customers and clients.

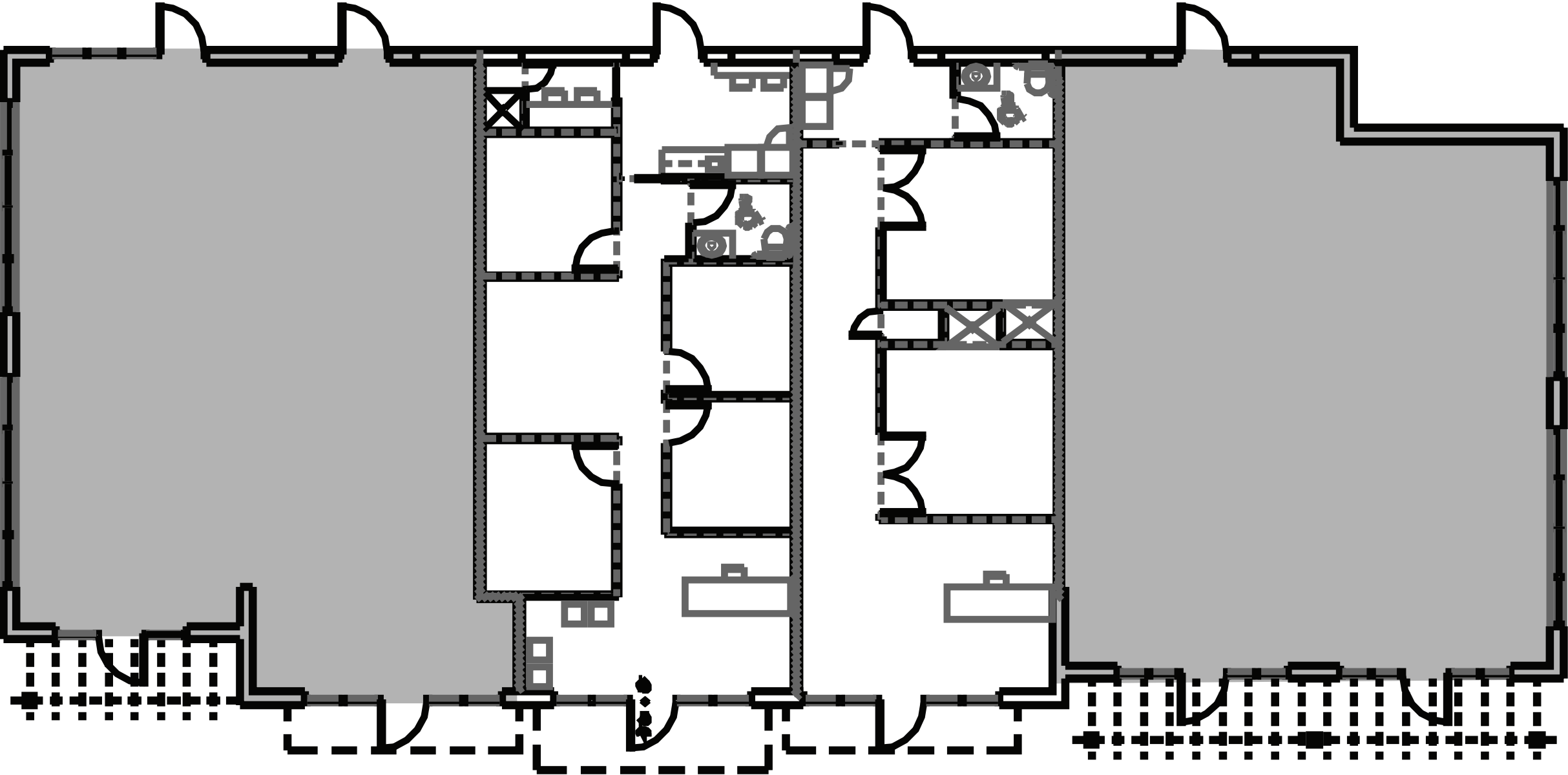
HIGHLIGHTS

- Outstanding high-profile location with significant vehicle and pedestrian traffic
- Situated within Riverside Village Shopping Centre, anchored by multiple notable tenants
- An abundance of glazing for ample natural light
- Turn-key, ready-to-operate space
- Nine existing office spaces
- Two complete washrooms and one shower room
- Kitchenette with sink and storage in backroom
- Electric vehicle charging stations on-site





FLOOR PLAN



LOCATION OVERVIEW

Located at the first point of entry into Penticton from Kelowna, Riverside Village is home to an abundance of notable anchoring tenants. Steps away from local eateries, coffee shops, entertainment, and recreation amenities.



CONTACT

STEVE LAURSEN

PERSONAL REAL ESTATE CORPORATION

250.808.8101

stevelaursen@rlkcommercial.com

JOEY STENSLAND

AGENT

250.470.7234

joeystensland@rlkcommercial.com

ROYAL LEPAGE KELOWNA

COMMERCIAL

www.rlkcommercial.com

This disclaimer shall apply to Steve Laursen Personal Real Estate Corporation (PREC*), Joey Stensland, RLK Commercial, Royal LePage Kelowna Real Estate Brokerage, and to all other divisions of the Corporation; to include all employees and independent contractors.

The information set out herein, including, without limitation, any projections, images, opinions, assumptions and estimates obtained from third parties (the "Information") has not been verified by Steve Laursen PREC*, Joey Stensland, RLK Commercial, and Royal LePage Kelowna does not represent, warrant or guarantee the accuracy, correctness and completeness of the Information.

Steve Laursen PREC* and Joey Stensland do not accept or assume any responsibility or liability, direct or consequential, for the Information or the recipient's reliance upon the Information.

The recipient of the Information should take such steps as the recipient may deem necessary to verify the Information prior to placing any reliance upon the Information. The Information may change and any property described in the Information may be withdrawn from the market at any time without notice or obligation to the recipient from Steve Laursen PREC* or Joey Stensland.

Steve Laursen PREC* and the Royal LePage Kelowna logo are the service marks of Steve Laursen PREC* and Royal LePage Kelowna.

Limited and/or its affiliated or related companies in other countries. All other marks displayed on this document are the property of their respective owners. All Rights Reserved.