



FOR SALE

---

2.31 ACRES HEAVY INDUSTRIAL  
ZONED LAND IN KAMLOOPS  
1705 MISSION FLATS ROAD, KAMLOOPS BC

STEVE LAURSEN

PERSONAL REAL ESTATE CORPORATION

250.808.8101

[www.rlkcommercial.com](http://www.rlkcommercial.com)

ROYAL LEPAGE KELOWNA

COMMERCIAL



# PROPERTY DETAILS



## MUNICIPAL ADDRESS

1705 Mission Flats Road,,  
Kamloops BC



## PID

029-019-575



## LEGAL DESCRIPTION

LOT A, PLAN EPP26944, DISTRICT  
LOT 249, KAMLOOPS DIV OF YALE  
LAND DISTRICT



## ZONED

I3 | Heavy Industrial



## SITE AREA

2.31 Acres



## SERVICES

Municipal services at the property lines



## PROPERTY TAX

\$9,457.15 (2021)



## LIST PRICE

\$2,995,000

## OVERVIEW

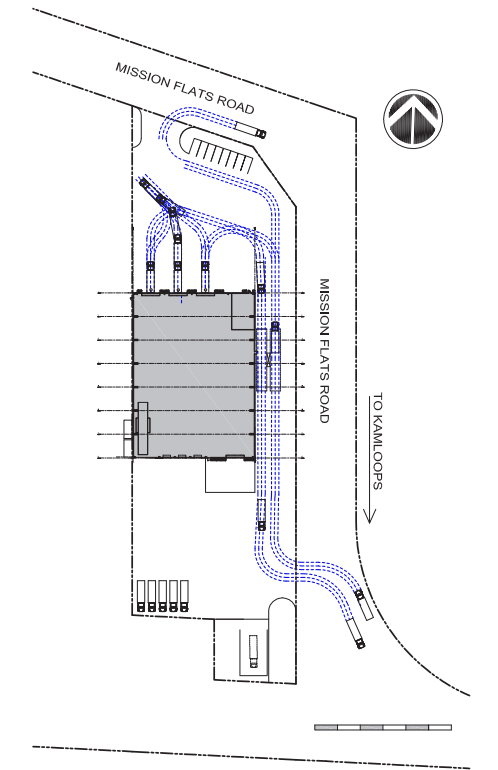
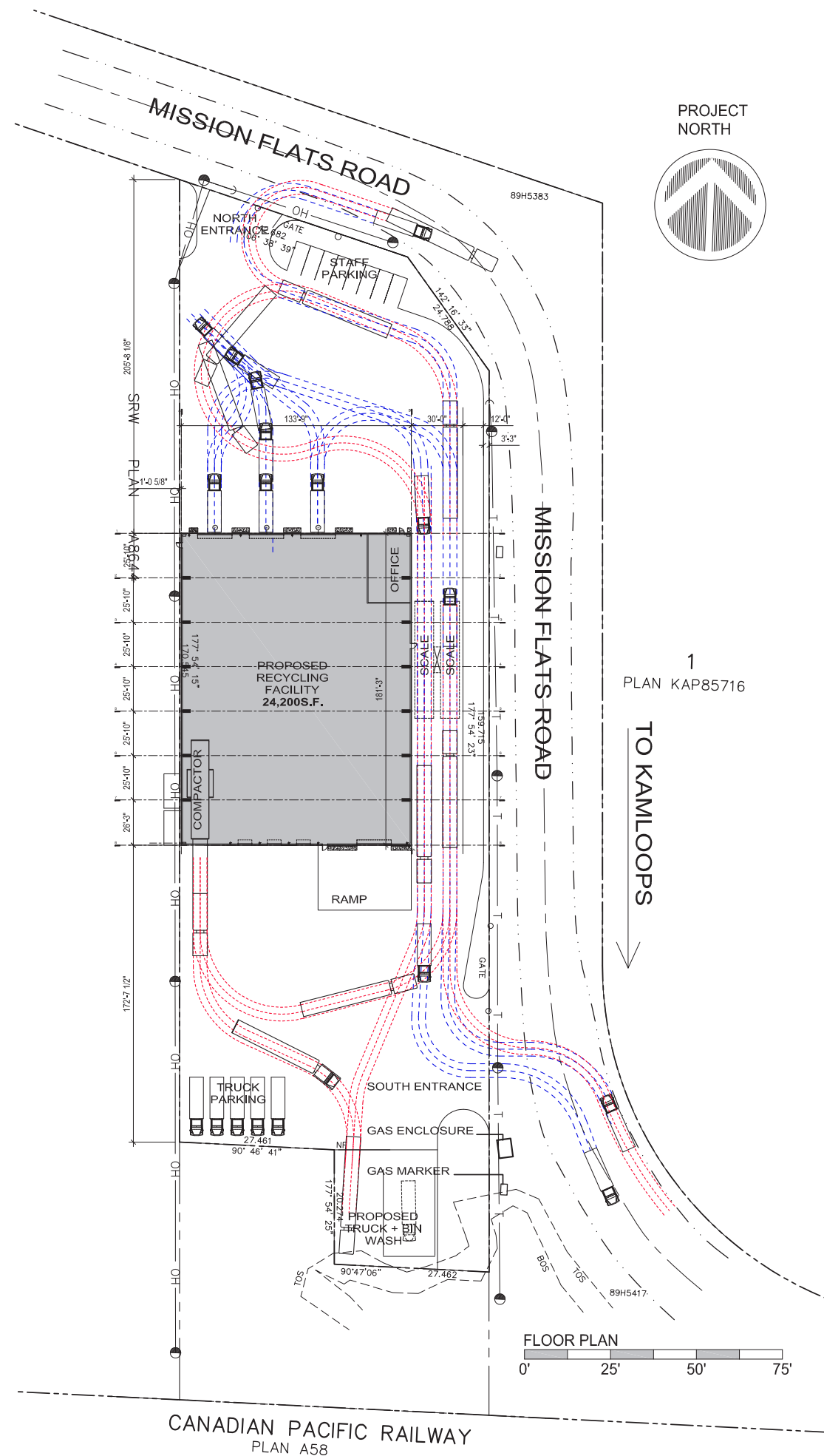
Opportunity to acquire a 2.31 acre heavy industrial zoned property in the Mission Flats industrial area of Kamloops. The property is ideally situated for Heavy and General Industrial uses such as outdoor storage of raw, bulk or extracted materials. The location is perfectly situated only seven minutes away from Kamloops city centre for easy access to a variety of services, shopping and dining.

# SITE PLAN

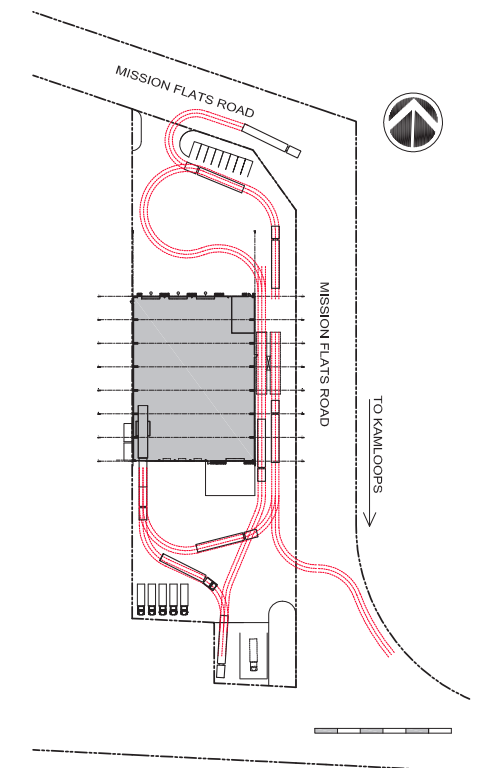
The Vendor recently obtained from the City of Kamloops approval to rezone the site to allow for the construction of a waste transfer station.

The facing plans include the following highlights:

- Construction of a 24,200 SF recycling facility with office and compactor
- Ample truck parking to the south of the Property
- Staff parking stalls
- Access points from two (2) different points of Mission Flats Road, on the north and south of the Property
- Truck wash area in the southern corner of the Property



4 SMALL TRUCK TRAFFIC NTS





# LOCATION OVERVIEW





**STEVE LAURSEN**  
PERSONAL REAL ESTATE CORPORATION

250.808.8101

stevelausen@rlkcommercial.com  
www.rlkcommercial.com

ROYAL LEPAGE KELOWNA  
**COMMERCIAL**

This disclaimer shall apply to Steve Laursen Personal Real Estate Corporation (PREC\*), RLK Commercial, Royal LePage Kelowna Real Estate Brokerage, and to all other divisions of the Corporation; to include all employees and independent contractors. This disclaimer shall also apply to Nicola Wealth, the landlord.

The information set out herein, including, without limitation, any projections, images, opinions, assumptions and estimates obtained from third parties (the "Information") has not been verified by Steve Laursen PREC\*, RLK Commercial, or Nicola Wealth and Royal LePage Kelowna and Nicola Wealth do not represent, warrant or guarantee the accuracy, correctness and completeness of the Information. Steve Laursen PREC\* and Nicola Wealth do not accept or assume any responsibility or liability, direct or consequential, for the Information or the recipient's reliance upon the Information.

The recipient of the Information should take such steps as the recipient may deem necessary to verify the Information prior to placing any reliance upon the Information. The Information may change and any property described in the Information may be withdrawn from the market at any time without notice or obligation to the recipient from Steve Laursen PREC\*.

Steve Laursen PREC\* and the Royal LePage Kelowna logo are the service marks of Steve Laursen PREC\* and Royal LePage Kelowna.

Limited and/or its affiliated or related companies in other countries. All other marks displayed on this document are the property of their respective owners.

All Rights Reserved.